

# BioRelax® | Mattress topper

## Product data sheet

### FEATURES

- Medical device Class I
- No electricity required (no plug or battery needed)
- No electromagnetic smog
- Works automatically when lying on it
- 100% natural effect
- No harmful side effects
- Outer fabric is anti-allergenic and breathable, tested biocompatibility
- Manufactured by hand in Germany
- Cannot be overdosed (unlimited duration of use possible, day and night)



### TECHNICAL DATA

- Dimension: approx. 90 × 190 cm (other sizes available)
- Height: approx. 1 cm
- Weight: approx. 4,7 kg
- Effective range: approx. 3 cm

### USAGE

- Can also be used on larger mattresses
- Suitable for all mattress types, including waterbeds
- Suitable for all bed types, including electrically adjustable beds
- Suitable for all sleeping positions (back, side, and stomach)
- For adults, children\*, and animals
- Can be used with or without clothing
- Can be used with or without a pillow
- Suitable for use with metal implants or pacemakers

\*Further details can be found in the instructions for use

### MATERIAL

- Anti-allergenic
- Skin-friendly
- Moisture-repellent
- Easy to care for



### MAGNETIC FIELD STRENGTH (MAGNETIC FLUX DENSITY)

UNIT	WORTH
T (Tesla)	~ 0,001 – 0,03
mT (Millitesla)	~ 1 – 30
Gauss	~ 10 – 300
μT (Microtesla)	~ 1.000 – 30.000

## WASHABILITY

Washable by hand using, for example, mild detergent or soap. To dry, simply hang in the air. If needed, disinfection is also possible using standard surface disinfectant spray. For easier long-term care, a cover layer (intermediate blanket or mattress protector) can be placed over the sleep mat to avoid frequent washing.

## TRANSPORT

The BioRelax mattress topper can be rolled up or folded lengthwise for transport (do not fold or crease across the width).

## TRANSPORT AIR TRAVEL

Carrying the mat on an airplane is possible, both in hand luggage and checked baggage. At baggage scanners, it is recommended to place it separately and, if necessary, inform staff that it is a magnetic mat containing weak magnetic films.

## TEMPERATURE

The mattress topper can withstand temperatures of up to 60°C. Heat sources on or under the mat (such as heating pads or hot water bottles) should not exceed 60°C during use.

## ADDITIONAL INFORMATION FOR USE IN BED

The mattress topper is typically placed directly on the mattress. A fitted sheet can then be placed directly over it.

Alternatively, for easier care or added comfort, an intermediate blanket or mattress protector can be placed on top of the mat, followed by the fitted sheet.

If desired, a fitted sheet with grounding properties (e.g., containing silver threads) can also be used over the mattress topper.

The integrated gentle magnetic fields are evenly distributed from head to toe, allowing use in either orientation.

Electronic devices near the mat do not affect its physical function and cannot damage it.

## LEGAL DISCLAIMER

Individual experiences may vary.

The mattress topper is not a substitute for medical treatment.

## MANUFACTURER

**KleinMed AG**  
Hinterbergstrasse 24  
6312 Steinhausen  
Switzerland

[info@kleinmed.net](mailto:info@kleinmed.net)

## Pilot Study

### Increased cell energy

In her pilot study, Prof Dr Brigitte König shows that Kleinsche Fields have a positive effect on the "power plants" of our cells, the mitochondria, and can have a positive influence on individual health

✓ Increased ATP production (cell energy) by Ø 29.4 %

✓ Significant decrease in mitochondrial mutations (delta4977).

✓ Increased PGC-1-alpha expression Ø by 81-fold (new mitochondrial formation).

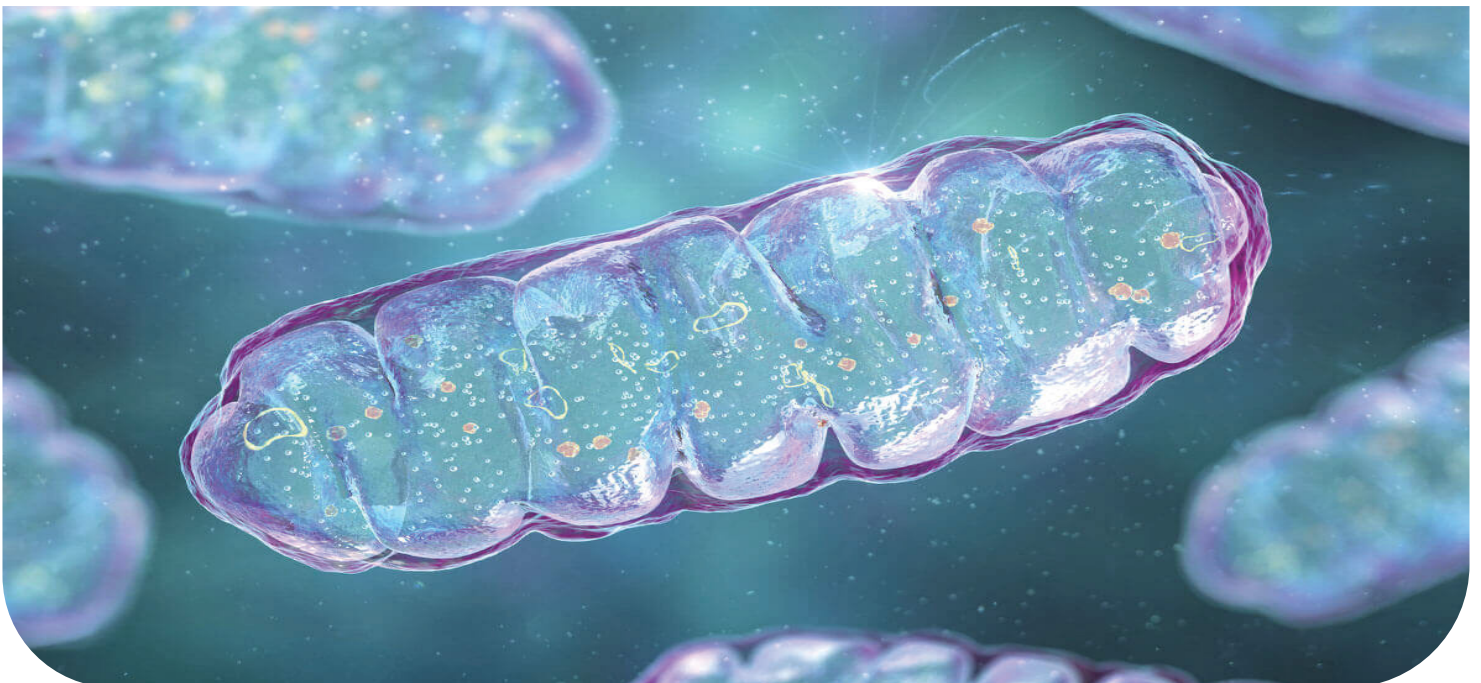
✓ Significantly increased stress resistance of the mitochondria.

✓ Improved mtDNA:ntDNA ratio Ø by a factor of 9 (increase in the number of mitochondria).

✓ Increase in mitochondrial mass Ø by a factor of 8

#### The pilot study shows that Kleinsche Fields:

- Can increase the number of mitochondria while simultaneously reducing mitochondrial mutations.
- Can have a positive influence on overall health, the body's regenerative capacity, and a wide range of illnesses.
- Can activate and regulate cell metabolism.
- Can improve the energy supply to the cells.
- Can significantly boost mitochondrial energy production (ATP).
- Can regenerate and reorganise mitochondria, making them more resistant to stress.



## In vitro preliminary study

# More cell energy, higher stress resistance

Prof. Dr. Brigitte König's study of two test subjects shows: Mitochondrial parameters improve significantly through the application of Kleinsche Fields, particularly in terms of energy production and the stress resistance of the "cellular power plants."

✓ Improvement of the bioenergetics of mitochondria.

✓ Increased mitochondrial ATP production (cell energy).

✓ Increase in mitochondrial enzyme activity.

✓ Increase in mitochondrial mass.

✓ Stabilisation of the mitochondrial membrane potential.

✓ Increased PGC-1-alpha activity (new formation).

### The preliminary study shows that Kleinsche Fields:

- Mitochondria more resistant to stressors.
- Can increase energy production in the mitochondria, an increase the mitochondrial mass.
- Can make mitochondria more efficient.
- Can reduce the "basic stress" of the cells and thus enable better regulation of the mitochondria.



## Measurement Series

### Increase in Brain Activity

Experiments conducted on a simulated natural blood flow demonstrate that Kleinsche Fields generate microvoltages within the body, measurable immediately and comparable to the body's own bioelectric currents.

✓ Clear electrical signal activity has been detected in capillaries where blood is flowing.

✓ Microvoltages are generated directly within the capillaries through which blood circulates.

✓ The signalling activity observed is comparable to the body's natural bioelectrical processes.

**This series of experiments provides compelling evidence that Kleinsche Fields can influence the body's vital biophysical systems. In particular, the results suggest that Kleinsche Fields:**

- Can contribute to the normalisation of the bioelectric cell environment.
- Can support the stimulation of energy production in the body's cells
- Can contribute to changing the metabolic situation of the body's cells.

